

Boardwalk

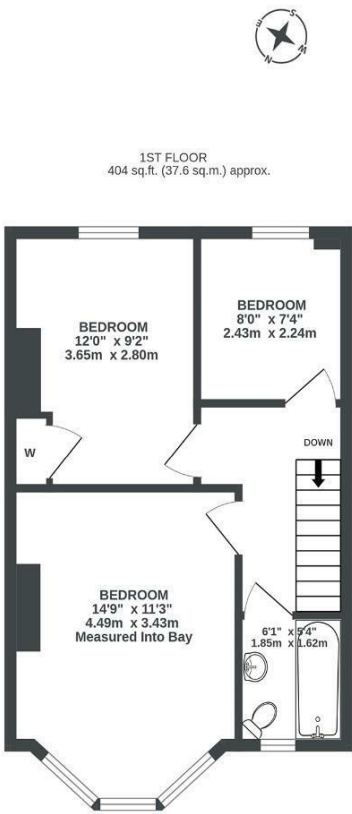
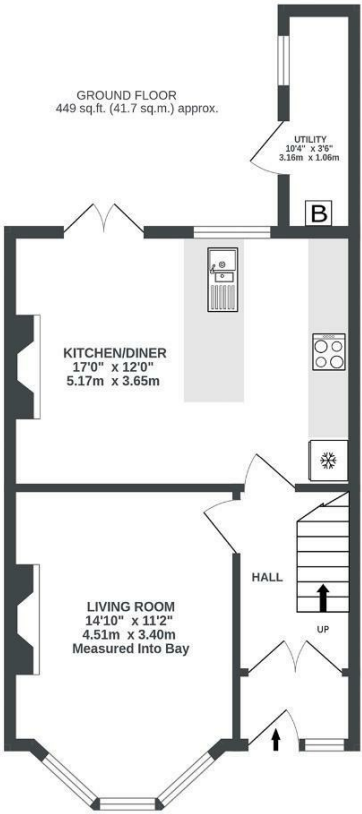
Bloomfield Road

, BRISTOL

Bloomfield Road

BRISLINGTON

APPROXIMATE FLOOR AREA
79.3 SQM / 853 SQFT



Illustrations are for reference purposes only, measurements are approximate, not to scale.

~~Boardwalk~~

Bloomfield Road

, BRISTOL



£435,000



BS4 3RD



3 Bedrooms



1 Bathrooms

"Bloomfield Road has been our first home and we have loved our time here over the last 3.5 years. We have felt blessed by the community here and the abundance of amenities on our doorstep is perfect; from Sandy Park High Street with all of its amazing local businesses, to the several surrounding retail parks. The library in particular has been such a treasure. We regularly request books for ourselves and the children and meet other local parents there, heading onto Kin for a coffee and chat. On the weekend, we enjoy grabbing coffee from 'The Deli' and going to Nightingale valley for a walk - it's so peaceful there and beautiful through all the seasons. We feel sad to leave this house but having had two children close together we have outgrown the space."

